

# Portable Oxygen Analyzer TB-SI



## What's TB-SI

Detective element is made of Zirconia electrolyte.

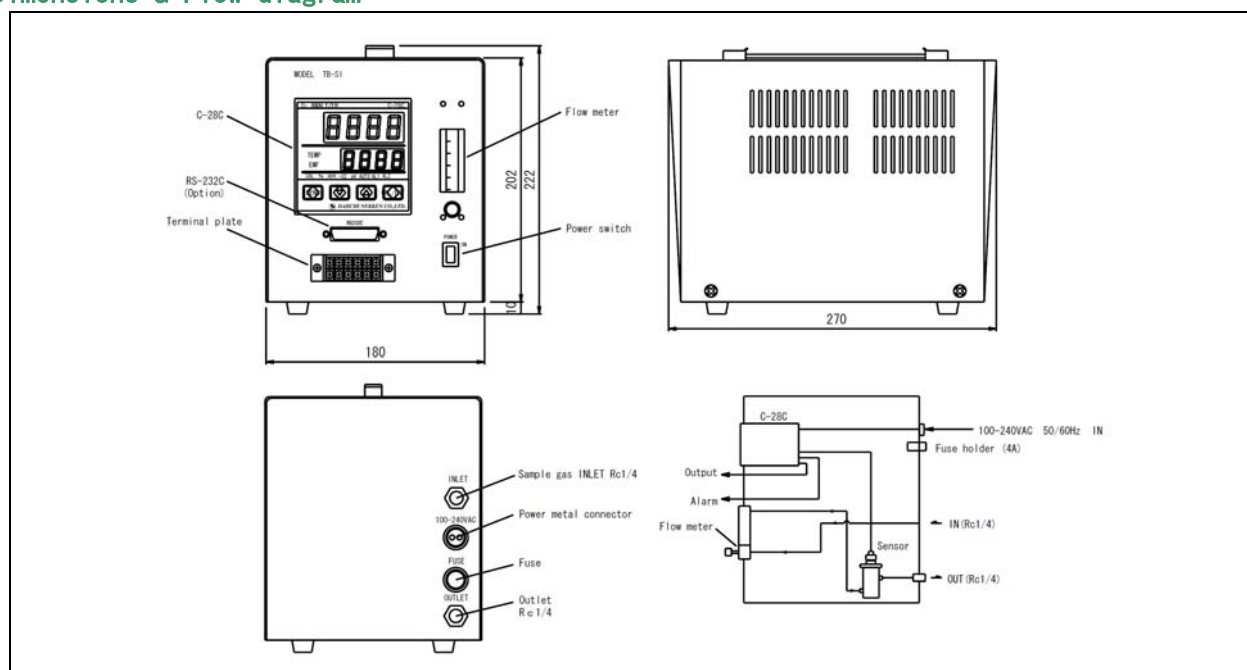
TB-IIF-P sensor and C-28C control unit are installed altogether in a box for portable uses.

This analyzer can be used for every application where range of 0.1ppm to 100%.

## Feature

- ◎ Wide range application, from 0.1ppm to 100%O<sub>2</sub>.
- ◎ Possible to select Output scale range freely.
- ◎ Serial communication function is equipped normally.
- ◎ 100V~240VAC power supply can be applied.

## Dimensions & Flow diagram



## Specifications

Principle	Zirconia electro-chemical cell
Structure	SS box, TB-IP sensor, C-28C control unit, flow meter with needle valve
Measuring range	0.1ppm~99.99%O <sub>2</sub>
Display	% : 0~99.99%O <sub>2</sub> ppm : 0~9999ppmO <sub>2</sub> or 999.9ppmO <sub>2</sub>
Output	4~20mADC/0-1VDC or 0-5VDC or 0-10VDC (Select one of them) RS-232C(Optional)
Range change	Auto/Manual
Initial setting	0~25%O <sub>2</sub> /0~9999ppmO <sub>2</sub> or 0~999.9ppmO <sub>2</sub>
Alarm	Hi/Lo, Hi/H・Hi、Lo/L・Lo (Contact A) Failure : Disconnection of Heater, RTD (Contact A)
Linearity	The Larger either of less than $\pm 1\%FS$ or $\pm 1ppm$
Repeatability	The Larger either of less than $\pm 1\%FS$ or $\pm 1ppm$
Response	90% reading 10sec. (Swinging to a high density side)
Drift	Less than $\pm 2\%FS/wk$
Piping	Rc1/4
Sampling	Supply by positive pressure of sample gas
Sample Flow Rate	0.2~2L/min
Sample gas Temp.	100°C
Warm up time	About 20min.
AC Power	100~240VAC
Accessory	Power supply code

※For the improvement, the specification and design may be changed without prior notice.

## Inquiry



**Daiichi Nekken CO., LTD**

13-22 Nishikura-Cyo Ashiya-City

Hyogo-Prefecture Japan

TEL 0797-31-2410 / FAX 0797-31-8951

URL <http://www.daiichinekken.co.jp>

E-mail [info@daiichinekken.co.jp](mailto:info@daiichinekken.co.jp)